



MONTHLY MEMBERSHIP PROGRESS REPORT

District 3 L

Results as of: 12/31/2015

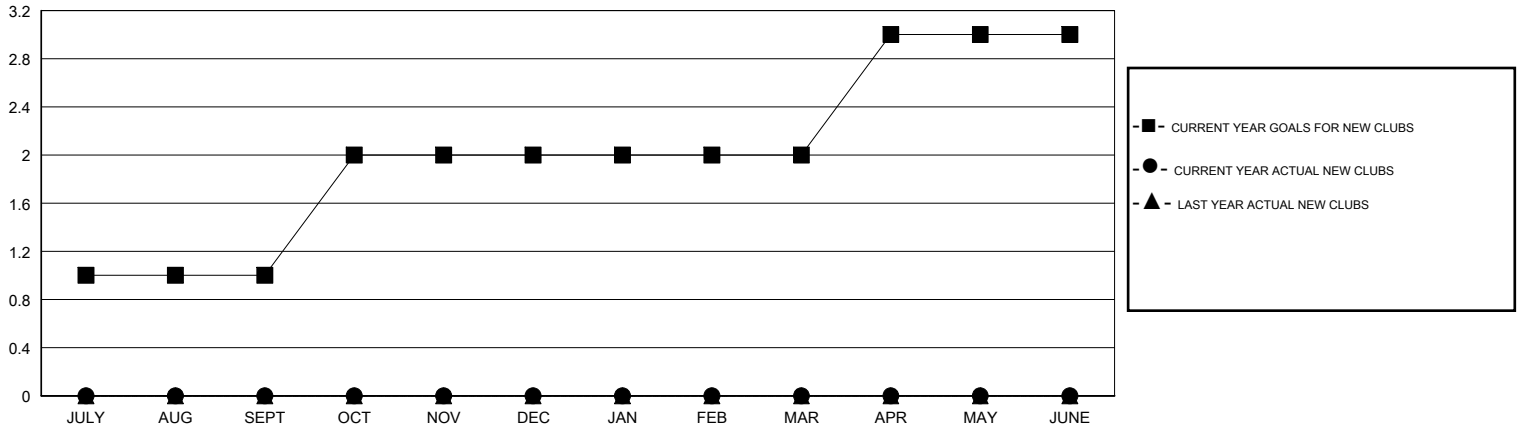
GMT: HAL GRIFFIN

LOCATION OKLAHOMA

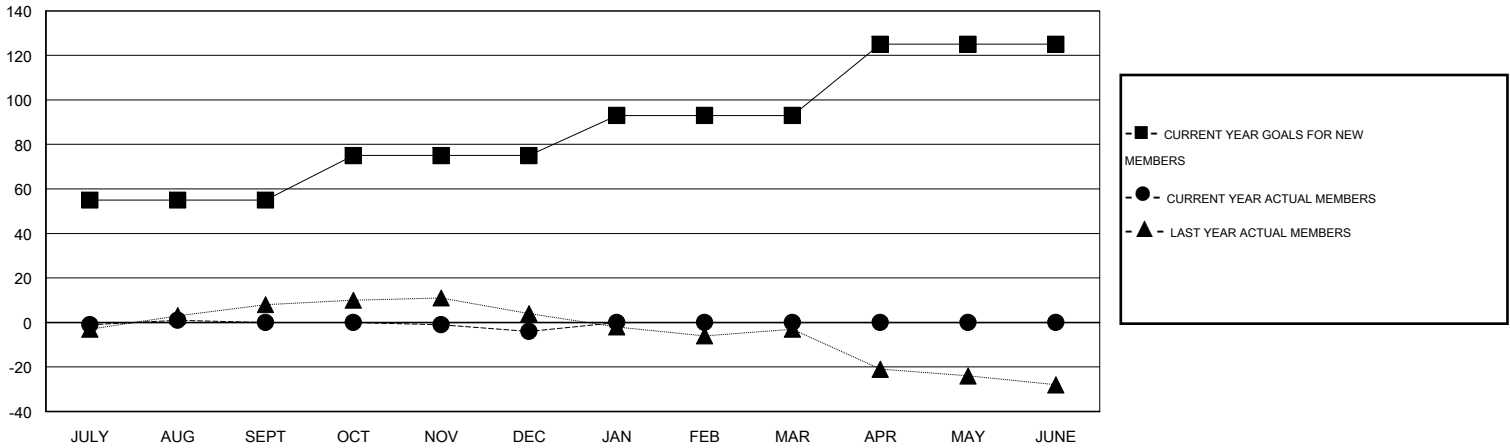
GMT CA 1

Clubs					Members				
RESULTS FOR 2015-2016					RESULTS FOR 2015-2016				
QUARTER	NEW CLUB GOAL	NEW CLUBS	DROPPED CLUBS	NET GAIN/LOSS	QUARTER	NEW MEMBER GOAL	CHARTER AND NEW MEMBERS ADDED	DROPPED MEMBERS	NET GAIN/LOSS
JULY/AUG/SEPT	1	0	0	0	JULY/AUG/SEPT	55	14	14	0
OCT/NOV/DEC	1	0	0	0	OCT/NOV/DEC	20	9	13	-4
JAN/FEB/MAR	0	0	0	0	JAN/FEB/MAR	18	0	0	0
APR/MAY/JUNE	1	0	0	0	APR/MAY/JUNE	32	0	0	0

GOALS AND ACTUAL NEW CLUBS CUMULATIVE



GOALS AND ACTUAL MEMBERS CUMULATIVE



DROPPED CLUBS: 0	12 CLUBS OF 36 ADDED 1 OR MORE NEW MEMBERS	GENDER DISTRIBUTION
		MALE 518 (67.45%)
		FEMALE 250 (32.55%)
DROPPED MEMBERS	CLICK HERE FOR HEALTH ASSESSMENT DATA	FAMILY UNIT MEMBERS 113
DECEASED 2		HEAD OF HOUSEHOLD 56
CLUB CANCELLED 0		NON-HEAD OF HOUSEHOLD 57
OTHER 25		
TOTAL 27		